



BS™ Rotary

CNC-400R, 500R, 630R, 800R

4° EIXO CNC



- Alta precisão coroa / sem-fim em bronze e níquel acionado por sem-fim de alta dureza que garante precisão e evita o desgaste
- Helicoidal de duplo flanco contra postos afim de evitar folgas.
- Rolamento duplo para o máximo de rigidez na usinagem.
- Construção rígida e moderna.
- Baixa relação de redução (90:1) proporciona maior rpm.
- Dotado de passagem no centro da placa.
- Contra ponto manual (opcional pneumático / hidráulico).

MODELO : **CNC-400 R**

- Motor position at right-side and horizontal installed.
- Table Dia.
- Type of CNC Rotary Table

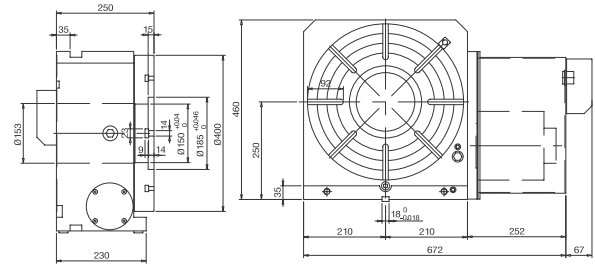
ITEM / MODEL		CNC-400R	CNC-500R	CNC-630R	CNC-800R
Placa Diam (mm)		400	500	630	800
Distância Centro - Base (mm)		250	310	400	480
Profundidade (mm)		250	290	320	340
Altura total Sem motor (mm)		460	570	725	880
Passagem Diam (mm)		150 ^{H7}	180 ^{H7}	254 ^{H7}	254 ^{H7}
Rasgos T (mm)		14 ^{H7}	18 ^{H7}	18 ^{H7}	20 ^{H7}
Guia de travamento (mm)		18 ^{H7}	18 ^{H7}	18 ^{H7}	18 ^{H7}
Servo motores	MELDAS	HF-204S	HF-204S	HF-354S	HF-354S
	FANUC	α12 i	α12 i	α22 i	α22 i
	SIEMENS	1FK7083	1FK7083	1FK7101	1FK7101
	HEIDENHAIN	QSY155B	QSY155B	QSY155C	QSY155C
Redução		1:90	1:120	1:180	1:180
		0.001°	0.001°	0.001°	0.001°
Max. R.P.M.		22.2	16.7	11.1	11.1
Bloqueio pneum. (kg•m) (P:5kg / cm		92	125	350	430
Bloqueio Hidraul (kg•m) (P:20kg / cm		184	250	700	1050
Precisão de Indexação (seg.)		A	15"	A	15"
		Alta Precisão			
Repetibilidade (seg.)	Unidirecional	4"	4"	4"	4"
	Bidirecional	8"	8"	8"	8"
Max. Torque (kg•m)		160	230	320	350
N.W. (kgs)		280	380	860	1200
Max. Carga	Vertical	W=300 kg	W=350 kg	W=400 kg	W=500 kg
	Horizontal	W=500 kg	W=600 kg	W=800 kg	W=1000 kg
Max. Carga Radial		F=1585 kg	F=1880 kg	F=2080 kg	F=2600 kg
		FxL=36 kg•m	FxL=89 kg•m	FxL=185 kg•m	FxL=230 kg•m
		FxL=122 kg•m	FxL=165 kg•m	FxL=228 kg•m	FxL=285 kg•m

BS™ Rotary

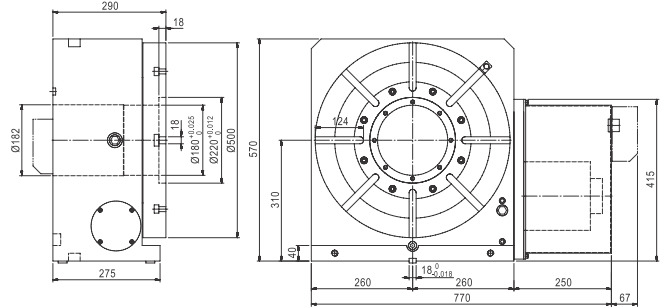
CNC-400R, 500R, 630R, 800R

4° EIXO CNC

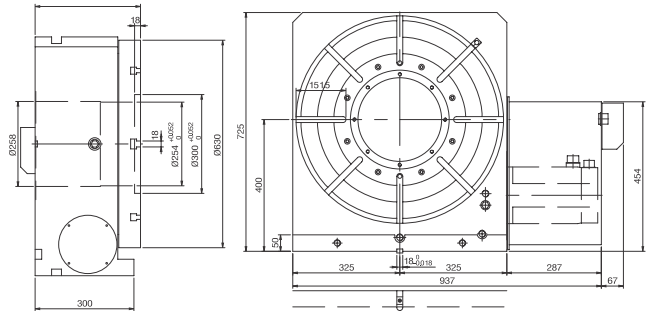
CNC-400R



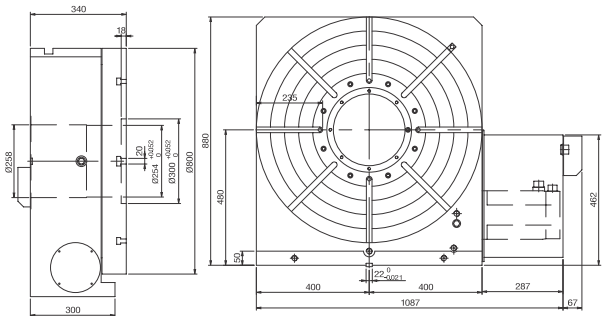
CNC-500R



CNC-630R



CNC-800R



Accuracy Standards

Unit:mm

MODEL \ ITEM	Table top flatness	Parallelism of table top and frame bottom	Runout of table spindle center	Perpendicularity of table top to frame bottom	Table top runout	Perpendicularity of table top to frame bottom guide block	Parallelism of center line between headstock & tailstock to frame bottom guide block
CNC-400R	0.015	0.015	0.01	0.02	0.015	0.02	0.02
CNC-500R	0.015	0.015	0.01	0.02	0.015	0.02	0.02
CNC-630R	0.025	0.025	0.01	0.025	0.02	0.02	0.02
CNC-800R	0.025	0.025	0.01	0.025	0.02	0.02	0.02