



BS™ Rotary

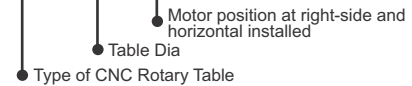
CNC-120R, 170R, 200R, 250R, 250R, 320R

4º EIXO CNC



- Alta precisão coroa / sem-fim em bronze e níquel acionado por sem-fim de alta dureza que garante precisão e evita o desgaste
- Helicoidal de duplo flanco contra postos afim de evitar folgas.
- Rolamento duplo para o máximo de rigidez na usinagem.
- Construção rígida e moderna.
- Baixa relação de redução (90:1) proporciona maior rpm.
- Dotado de passagem no centro da placa.
- Contra ponto manual (opcional pneumático / hidráulico).

MODELO: **CNC-320 R**



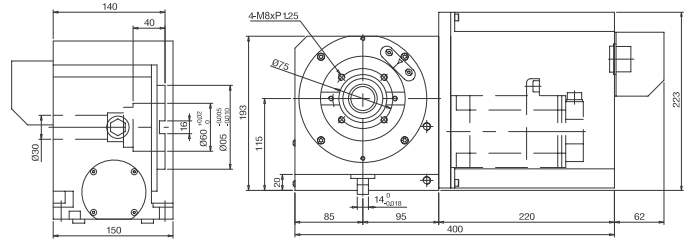
ITEM / MODELO		CNC-120R	CNC-170R	CNC-200R	CNC-250R	CNC-320R
Placa Diam (mm)		120	170 / 6.69	200 / 7.87	250 / 9.84	320 / 12.60
Distância Centro - Base (mm)		115	135 / 5.31	160 / 6.3	185 / 7.28	210 / 8.27
Profundidade (mm)		170	165 / 6.5	165 / 6.5	200 / 7.87	240 / 9.45
Altura total Sem motor (mm)		193	240 / 9.45	270 / 10.63	315 / 12.4	380 / 14.96
Passagem Diam (mm)		30 ^{H7}	35 ^{H7} / 1.37 ^{H7}	35 ^{H7} / 1.37 ^{H7}	70 ^{H7} / 2.75 ^{H7}	110 ^{H7} / 4.33 ^{H7}
Rasgos T (mm)		10 ^{H7}	12 ^{H7} / 0.47 ^{H7}	12 ^{H7} / 0.47 ^{H7}	12 ^{H7} / 0.47 ^{H7}	14 ^{H7} / 0.55 ^{H7}
Guia de travamento (mm)		14 ^{H7}	18 ^{H7} / 0.71 ^{H7}	18 ^{H7} / 0.71 ^{H7}	18 ^{H7} / 0.71 ^{H7}	18 ^{H7} / 0.71 ^{H7}
Servo motores	MELDAS	HF-75T	HF-104T	HF-104T	HF-104T	HF-204S
	FANUC	α2 i	α4 i	α4 i	α4 i	α12 i
	SIEMENS	1FK7042	1FK7060	1FK7060	1FK7060	1FK7083
	HEIDENHAIN	QSY96A	QSY116C	QSY116C	QSY116C	QSY155B
Redução		1:60	1:90	1:90	1:90	1:180/1:90
Min. Indexação (grau)		0.001°	0.001°	0.001°	0.001°	0.001°
Max. R.P.M. (rpm) (motor : 2000 / rpm)		33.3	22.2	22.2	22.2	11.1/22.2
Bloqueio pneum. (kg•m) (P:5kg / cm ²)		12	25	25	47	71
Bloqueio Hidraul (kg•m) (P:20kg / cm ²)		24	50	50	94	142
Precisão de Indexação (seg.)		60"	25"	25"	15"	15"
ALTA PRECISÃO DE POSICIONAMENTO						
Repetibilidade (seg.)	Unidirecional	4"	4"	4"	4"	4"
	Bidirecional	8"	8"	8"	8"	8"
Max. Torque (kg•m)		12	23	23	45	78
N.W. (kgs)		28	70	84	124	210
Max. carga	Vertical	W=35 kg	W=75 kg	W=100 kg	W=125 kg	W=150 kg
	Horizontal	W=75 kg	W=150 kg	W=200 kg	W=300 kg	W=350 kg
Max. carga radial		F=600 kg	F=800 kg	F=822 kg	F=1208 kg	F=1375kg
		FxL=6 kg•m	FxL=11.2 kg•m	FxL=13 kg•m	FxL=18.2 kg•m	FxL=26 kg•m
		FxL=12 kg•m	FxL=40 kg•m	FxL=50 kg•m	FxL=72 kg•m	FxL=92 kg•m

BS™ Rotary

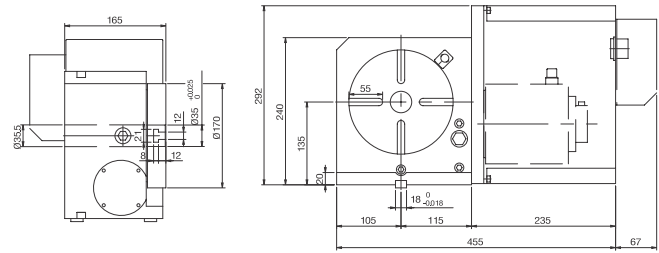
CNC-120R, 170R, 200R, 250R, 320R

4 Eixo CNC

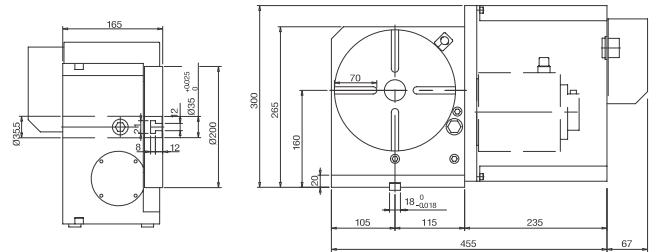
CNC-120R



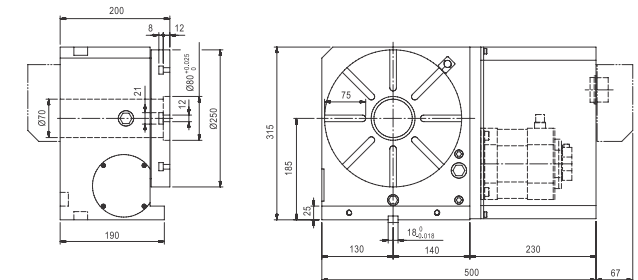
CNC-170R



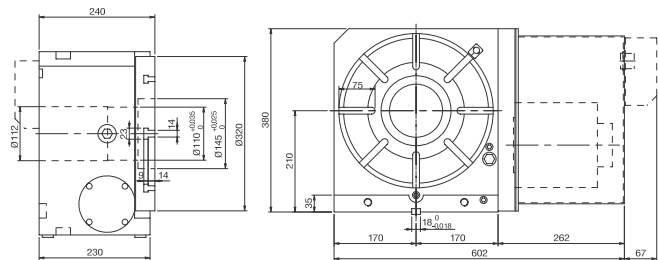
CNC-200R



CNC-250R



CNC-320R



NOTE : Difference motor becomes difference length of motor cover

Accuracy Standards

Unit:mm

MODEL \ ITEM	Table top flatness	Parallelism of table top and frame bottom	Runout of table spindle center	Perpendicularity of table top to frame bottom	Table top runout	Perpendicularity of table top to frame bottom guide block	Parallelism of center line between headstock & tailstock to frame bottom guide block
CNC-120R	0.01	0.01	0.015	0.012	0.01	0.02	0.02
CNC-170R	0.01	0.01	0.01	0.02	0.015	0.02	0.02
CNC-200R	0.01	0.01	0.01	0.02	0.015	0.02	0.02
CNC-250R	0.01	0.01	0.01	0.02	0.015	0.02	0.02
CNC-320R	0.01	0.01	0.01	0.02	0.015	0.02	0.02