



BS™ Rotary

GCT-301, 450, 600, 700, 800, 1000, 1200 Precision Index Table



- ⊙ Suitable for the high accuracy machining such as Boring-Milling, Grinding-Machine.
- ⊙ Build-in 2 pieces hirth coupling for positioning, indexing accuracy +/- 3 sec, ensure a long-term operation.
- ⊙ Powerful clamping design, allow heavy cutting and boring.
- ⊙ Clamping / Unclamping by pneumatic, easy operation.
- ⊙ The body is FC-35 cast iron, durable and will last longer without deformation.

MODEL NO : GCT-600

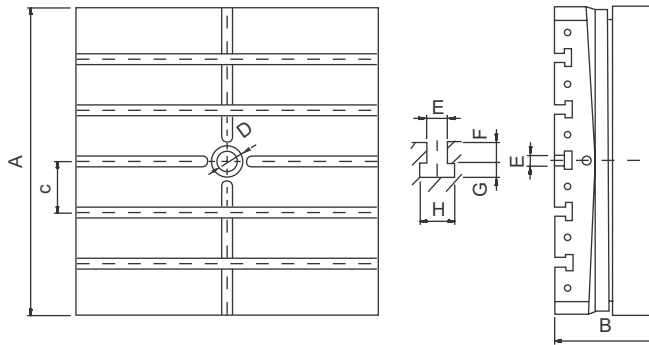
● Size of Table
● Type of precision index table



ITEM / MODEL		GCT-301	GCT-450	GCT-600	GCT-700	GCT-800	GCT-1000	GCT-1200
Table size L x W (mm)		300X300	450X450	600X600	700X700	800X800	1000X1000	1200X1200
Height (mm)		140	170	200	220	280	300	340
Spindle hole (mm)		ø30	ø30	ø40	ø40	ø60	ø60	ø80
T-slot (mm)		12	18	20	20	22	22	22
Table rotating		clockwise and counterclockwise						
Table Lifting up & Clamp down stroke (mm)		5	5	5	5	8	8	8
Driving	Longitudinal	Air Pressure 5~8 kg/cm ²						
	Revolving	Manual						
Number of division (degree)(evenly distributed)		15°	1° or 5°					
Max. load weight in theory (kgs)		1200	2400	3400	3400	4500	6000	7000
Allowable load weight (kgs)		5000	1000	2000	2000	3000	5000	6000
Clamping capacity (kgs)		-	2200	3200	3200	5400	5400	8100
N.W. (kgs)		90	200	400	600	900	1200	2000

All specifications can be modified according to customers' requirement.

DIMENSION **GCT-301~1200**



	GCT-301	GCT-450	GCT-600	GCT-700	GCT-800	GCT-1000	GCT-1200
A	300	450	600	700	800	1000	1200
B	140	170	200	220	280	300	340
C	100	100	100	125	100	150	200
D	-	30	40	40	60	60	80
E	12	18	20	20	22	22	22
F	14	16	20	20	23	23	23
G	9	12	14	14	15	15	15
H	23	28	35	35	38	38	38



- ◉ Suitable for Horizontal Machining Center, floor type boring machine. For both indexing & simultaneous machine.
- ◉ Hi-Accuracy, Adapting a special anti-wearing alloy of bronze/nickel double-lead worm wheel and hardened steel worm screw ensure long term indexing accuracy.
- ◉ Could be manufactured according to customers' designing and interface of machine Saddle.
- ◉ Hydraulic Clamping, high rigid brake structure for heavy cutting.
- ◉ Table size from size 400mm to 3,000mm or manufactured according to customer's requirement, high loading/accuracy design also available suitable for heavy machining and metrology applications.
- ◉ Build-in hydraulic ports system suitable for Special Machine of Horizontal machining Center and Automobile/Motorbike Industrial.
- ◉ All units in Tables are manufactured from high quality materials and workmanship. Every Table has Running/Accuracy testing for at least 48 hours. All electrical parts are imported from Japan/Germany for performance confidence.
- ◉ Random dividing 0.001 degrees, Indexing Accuracy according to customer's requirement 6 sec, 10 sec. or higher indexing accuracy. (encoder is required)

ITEM / MODEL	HRT-400	HRT-500	HRT-630	HRT-800
Table Size (mm)	400	500	630	800
T-slots size (mm)	14	14	18	22
Table Swing Dia. (mm)	500	660	800	1040
Total Height (mm)	310	295	360	385
Max. Loading (kgs)(evenly distributed)	500	600	1200	2000
Vertical Max. Force (kg)	1585	1880	2080	2080
Load Capacity During Rotating(kg / cm ²)	102	191	405	816
Clamping Force (kgs)	3500	5500	6500	7000
Machining Torque (kg/m)	122	230	330	350
Parallelism Of Table Top and Frame Bottom (mm)	0.015	0.015	0.025	0.03
Repeatability (sec.)	4"	4"	4"	4"

ITEM / MODEL	HRT-1000	HRT-1500	HRT-2000	HRT-2500	HRT-3000
Table Size (mm)	∅1000 □ 1000X1000	∅1500 □ 1500X1500	∅2000 □ 2000X2000	∅2500 □ 2500X2500	∅3000 □ 3000X3000
T-slots size (mm)	22	28	28	32	32
Table Swing Dia. (mm)	○ 1000 □ 1300	○ 1500 □ 1950	○ 2000 □ 2600	○ 2500 □ 3200	○ 3000 □ 3800
Total Height (mm)	530	530	600	600	650
Max. Loading (kgs)	10,000	20,000	35,000	60,000	90,000
Indexing Accuracy (sec.)	A6" B10"	A6" B10"	A6" B10"	A6" B10"	A6" B10"
Repeatability (sec.)	4"	4"	4"	4"	4"
Clamping Force (kgs)	10,000	15,000	20,000	37,000	70,000
Machining Torque (kg/m)	300	700	900	1600	3100
Parallelism Of Table Top and Frame Bottom (mm)	0.01/300	0.01/300	0.01/300	0.01/300	0.01/300
Gear Ratio	1/360	1/720	1/720	1/720	1/720
Servo Motor Type	FANUC α22 i	FANUC α30 i	FANUC α30 i	FANUC α30i	FANUC α30 i

All specifications can be modified according to customers' requirement.



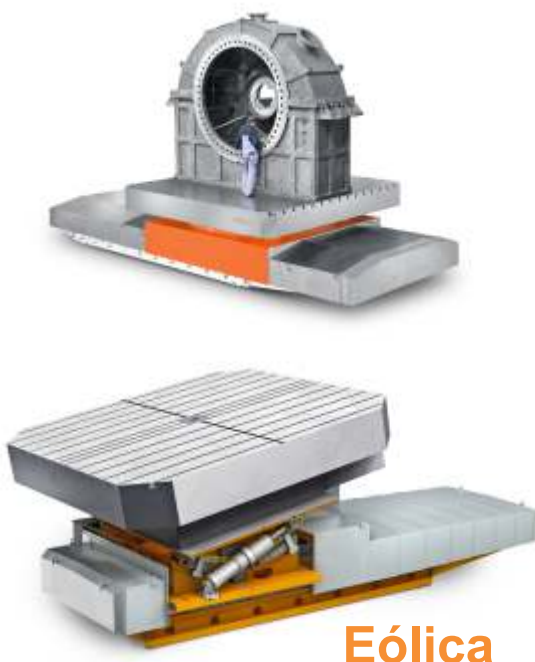
BS™ Rotary

Mesa Giratória CNC & Eólica

Série Alta Precisão



MESA DV		SLR 14	SLR 17	SLR 21	SLR 26
Capacidade de Carga	t	50	70	100	140 ~400
Diâmetro	mm	1450	1750	2150	2600 ~4000
Diâmetro Rolamento	mm	1252	1552	1802	2352 ~ 3782
Altura	mm	620	620	720	800
Força	KN	350	550	700	1100
Torque	KN.m	16	39	44	83
Torque Tangencial	KN.m	50	85	140	230
Precisão	mm	0,01	0,01	0,015	0,015
Precisão Incremental	mm	2	2	2	2
Velocidade	rpm	7	3,5	3	1,7



Inclinação para Usinagem HUB

- For optimum accessibility to workpieces
- Machining components for wind-generator systems such as rotor hubs and housing
- **Tilting angle 0 - 10°, on request up to 90°**
- Highest positioning accuracy of tilting axis $\pm 5''$
- For maximum transport loads up to 35 tons in tilting mode
- Double transport load in non-tilted status
- Roller-bearing-supported curve segment for precise tilting positioning
- Minimum energy consumption with roller bearings in all axes
- No energy consumption in tilted status